

THE NHMRC CHRONIC KIDNEY DISEASE CENTRE OF RESEARCH EXCELLENCE (CKD.CRE) 2015-2019: the first year.



WE Hoy^{1,2}, HG Healy^{1,3}, L Connelly^{1,2}, G Mitchell^{1,2}, K Panaretto^{1,6}, Z Endre^{1,5}, JS Coombes^{1,2}, G Gobe^{1,2}, A Bonner^{1,3,4}, RG Fassett^{1,2} & A Cameron^{1,2,3};
on behalf of the NHMRC CKD.CRE and CKD.QLD collaborative's.

¹NHMRC CKD.CRE and CKD.QLD; ²University of Queensland, Brisbane, QLD, Australia; ³Kidney Health Services, Metro North Hospital and Health Service, Brisbane, QLD, Australia;

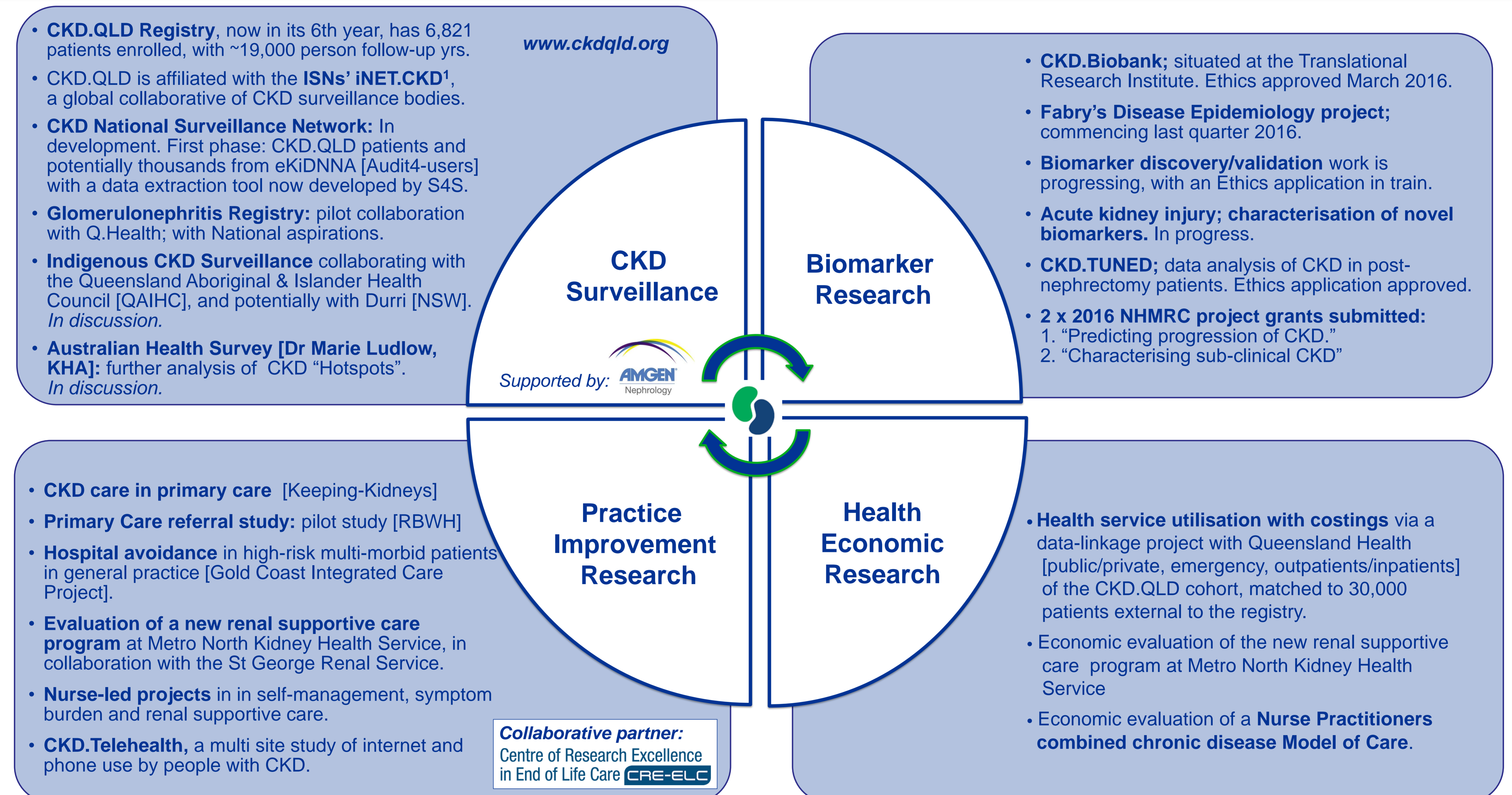
⁴School of Nursing, Queensland University of Technology, QLD, Australia; ⁵University of New South Wales, NSW, Australia; ⁶James Cook University, QLD, Australia;

Funded by the NHMRC. Supported by AMGEN Nephrology and Kidney Health Australia.

Aim: To provide a first year progress report on the NHMRC CKD.CRE

Background/Methods: The Centre is dedicated to improving knowledge of CKD and its management across the health care spectrum. Although based at The University of Queensland, the Centre includes collaborators in almost every state/territory. Its core research streams are CKD surveillance, practice improvement, biomarker research and health economics. The CKD.CRE began its 5 year program in 2015.

Results: Each stream is now established:



Capacity building/education: includes 5 [funded] post-doctoral fellows and 9 RHD students, with 7 affiliated clinician researchers [medical and nursing].

Research translation and engagement: is facilitated by a "Consultancy and Engagement Committee" comprised of nephrologists, representatives of the AIHW, and peak academic and private bodies including Kidney Health Australia.

Selected Outcomes:

- presentations local, state, national and international meetings ≥ 40 2015-2016 financial year.
- 9 articles and 1 book chapter have been published [see listing], with 6 in the process of submission.
- additional leveraged grants totalling \$515,000, to date
- meeting highlights: 2015 NHMRC CKD.CRE Colloquium; 2016 Kidney Supportive Care Masterclass

Conclusion: The NHMRC CKD.CRE is in-line with its projected 5-year framework, and is both actioning and equipped to conduct innovative, high quality, collaborative research.

Publications

1. Dienemann T, Fujii N, Orlandi...Hoy WE, et al. "International Network of Chronic Kidney Disease cohort studies (iNET-CKD): a global network of chronic kidney disease cohorts." *BMC Nephrology*, 2016, 17:121
2. Bertram JF, Hoy WE. "Ageing: Nephron loss in the ageing kidney — it's more than you think." *Nature Reviews Nephrology* - August 2016
3. Almutary H, Douglas C, Bonner A. "Multidimensional symptom clusters: An exploratory factor analysis in advanced chronic kidney disease" *Journal of Advanced Nursing* - May 2016 DOI: 10.1111/jan.12997
4. Almutary H, Douglas C, Bonner A. "Which patients with CKD have the greatest symptom burden? A comparative study of advanced CKD stage and dialysis modality." *Journal of Renal Care*; March 2016
5. Brown L, Gardner G, Bonner A. "A randomized controlled trial protocol testing a decision support intervention for older patients with advanced kidney disease." *Journal of Advanced Nursing* 72(5) Feb 2016
6. Dinh TTH, Bonner A, et al. "The effectiveness of health education using the teach-back method of adherence and self-management in chronic disease." *JBI Database of Systematic Reviews and Implementation Reports*, 14(1), 210-247. 2016.
7. Havas K, Bonner A, Douglas C. "Self-management support for people with chronic kidney disease: Patient perspectives" *Journal of Renal Care* 42(1) - September 2015
8. Almutary H, Bonner A, Douglas C. "Arabic translation, adaptation and modification of the dialysis symptom index for chronic kidney diseases stages four and five." *BMC Nephrology* 16:36; 2015
9. Mallett AJ, Patel C, et al. "A protocol for the identification and validation of novel genetic causes of kidney disease". *BMC Nephrology* (2015) 16:152
10. Pianta TJ, Gobe GC, Ownes EP, Endre ZH. "Overview of pathophysiology of acute kidney injury: human evidence, mechanisms, pathological correlations, biomarkers and animal models." *Book chapter in "Core concepts of Acute Kidney Injury."* 2016

Queries please contact the NHMRC Chronic Kidney Disease Centre for Research Excellence ckd.cre@uq.edu.au or phone +61 7 3346 4995 .

Primary Author contact details: Prof Wendy Hoy w.hoy@uq.edu.au

